

Well done to all the children for another fantastic term of learning and for being so engaged with our Antarctica topic. We are looking forward to many more exciting learning opportunities next term as we embark on our 'Woodlands and Rainforest' learning adventure. For your home learning we attach a reading comprehension and some number bond challenges for you to work on.

READING COMPREHENSION:

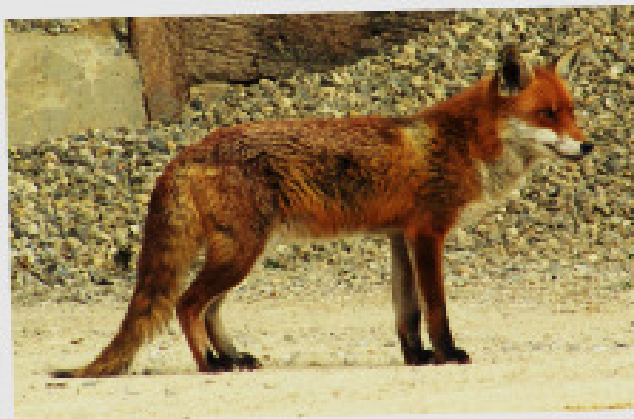
Explain to somebody what you have to do to find the answers to the questions about the text.

All about...

The Fox



Foxes are a member of the dog family, and are found throughout the United Kingdom. Though they are like dogs, they are only a little bit bigger than most cats. The male fox is called a dog and a female fox is called a vixen.



Did you know?

They are mammals, which means they have warm blood and fur. Even though they are nocturnal (move around and eat at night), they can be seen during the day. They like to sunbathe.

Amazing Facts

Foxes have brilliant hearing. They can hear something as quiet as a watch ticking, from 30 metres away! This would be like hearing someone whisper from across the playground. As well as having great hearing, they can run really fast. They can run up to 30 miles per hour, which is really fast.

What do foxes eat?

Foxes are carnivores, which means they eat meat, but they will eat berries off bushes and even look in rubbish bins for leftovers. Baby foxes, called kits, drink milk from their mothers before they start eating more usual foods like worms! Foxes will also hide food to come back and eat later.

Where do they live?

Foxes are found in all sorts of places, or habitats. They live with other foxes in dens in the countryside but will also make their homes in towns and cities. You might spot one if you are out on a dark night.

Questions About The Fox

Answer the questions below in full sentences.

1. Foxes are only a little bit bigger than what animal?

2. What is a female fox called?

3. How fast can foxes run?

4. Name two places you might find a fox.

5. Name two things that a fox might eat.

6. From how far away can a fox hear a ticking watch?

7. What does nocturnal mean?

8. How do we know foxes are mammals?

$4 + 6 = \square$	$2 + 18 = \square$	$50 + 50 = \square$
$1 + \square = 20$	$\square + 30 = 100$	$80 + \square = 100$
$30 + \square = 100$	$14 + \square = 20$	$2 + \square = 10$
$5 + \square = 20$	$5 + 5 = \square$	$17 + 3 = \square$
$\square + 20 = 100$	$\square + 3 = 20$	$\square + 60 = 100$
$2 + 8 = \square$	$11 + \square = 20$	$\square + 0 = 100$
$13 + 7 = \square$	$90 + \square = 100$	$3 + \square = 10$
$10 + \square = 100$	$\square + 4 = 10$	$\square + 9 = 10$
$\square + 4 = 20$	$70 + \square = 100$	$70 + \square = 100$
$7 + \square = 20$	$1 + \square = 10$	$\square + 2 = 20$
$10 + \square = 20$	$\square + 6 = 20$	$5 + 15 = \square$
$1 + 9 = \square$	$0 + \square = 20$	$10 + \square = 10$
$8 + 2 = \square$	$2 + \square = 20$	
$\square + 50 = 100$	$\square + 3 = 10$	

$4 + 6 =$	$2 + 18 =$	$50 + 50 =$
$1 + 9 =$	$70 + 30 =$	$80 + 20 =$
$30 + 70 =$	$14 + 6 =$	$2 + 8 =$
$5 + 15 =$	$5 + 5 =$	$17 + 3 =$
$80 + 20 =$	$17 + 3 =$	$40 + 60 =$
$2 + 8 =$	$11 + 9 =$	$100 + 0 =$
$13 + 7 =$	$90 + 10 =$	$3 + 7 =$
$10 + 90 =$	$6 + 4 =$	$1 + 9 =$
$16 + 4 =$	$70 + 30 =$	$70 + 30 =$
$7 + 13 =$	$1 + 9 =$	$18 + 2 =$
$10 + 10 =$	$14 + 6 =$	$5 + 15 =$
$1 + 9 =$	$0 + 20 =$	$10 + 0 =$
$8 + 2 =$	$2 + 18 =$	
$50 + 50 =$	$7 + 3 =$	

How many of these calculations can you mentally solve in 2 minutes?