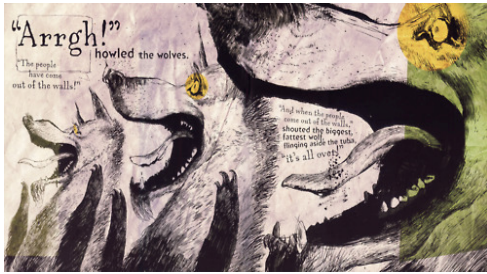


Please note that in Year 2 the children will not be allowed to use the LEGO POKEMON cards or other collections of cards to share or swap at school. It has negative impact on how the children interact and play.

Year Two Home Learning Autumn 1, Week 6 11.10.19

This week we have been

- sharing ideas for what makes a good story and reading

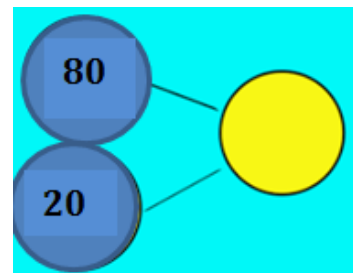
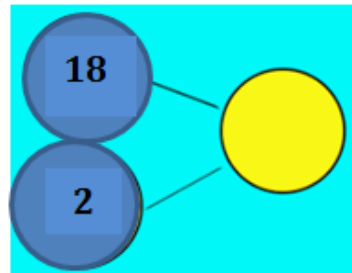
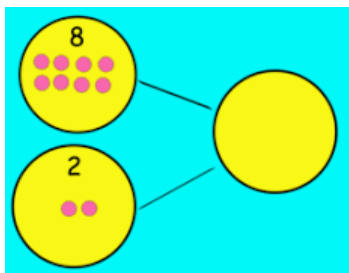


Wolves in the Walls

What is your favourite part and why?
Describe the wolves in this part of the story.

- learning how to use the **part-part-whole model** to show our understanding of two-digit numbers and number bonds

If you know the number bonds to 10, make links to show number bonds to 20 and 100.

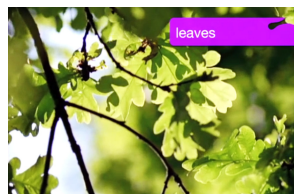
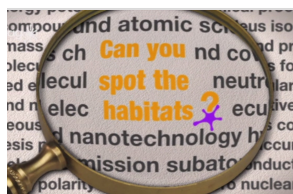


What calculations do the models show?

$$2 + 8 = \quad 10 - 2 =$$

$$8 + 2 = \quad 10 - 8 =$$

- what a habitat is and what habitats are in the school grounds or microhabitats in the tree that we are observing



Go to BBC Bitesize to find more information

<https://www.bbc.co.uk/bitesize/topics/zx882hv/articles/zc42xnb>

For home learning you can...

- practise the words overleaf, these will be our spelling focus for next week
- change the attached sentences from present tense to past tense

Challenge

Change these sentences into the past tense:

I **eat** jam with my toast.

I **keep** warm by wearing my hat and gloves.

I **am** walking to school.

We **go** swimming on Saturday.

You **are** the winner of the race.

The sound /j/ spelt with '-dge' and '-ge' at the end of words

badge			
edge			
bridge			
dodge			
fudge			
age			
huge			
change			
charge			
village			