



# Year 6 SATs Tests 2023

9<sup>th</sup> to 12<sup>th</sup> May





# Timetable for The Week

Test	Date
<b>English grammar, punctuation and spelling (SPaG/GPS)</b> Paper 1: short answer questions (45 minutes) Paper 2: spelling (15 minutes)	<b>Tuesday 9<sup>th</sup> May</b>
<b>English reading test</b> Paper 1: Reading comprehension (60 minutes)	<b>Wednesday 10<sup>th</sup> May</b>
<b>Mathematics</b> Paper 1: arithmetic (30 minutes) Paper 2: reasoning (40 minutes)	<b>Thursday 11<sup>th</sup> May</b>
<b>Mathematics</b> Paper 3: reasoning (40 minutes)	<b>Friday 12<sup>th</sup> May</b>



# Assessment and Reporting

Mathematics	
Raw score	Scaled score
0	No scaled score (N)
1	
2	
3	80
4	80
5	80
6	80
7	81
8	81
9	82
10	83
11	83
12	84
13	84
14	85
15	86
16	86
17	86
18	87
19	87
20	88
21	88
22	89
23	89
24	89
25	90
26	90
27	90

Mathematics	
Raw score	Scaled score
28	91
29	91
30	91
31	92
32	92
33	92
34	93
35	93
36	93
37	94
38	94
39	94
40	94
41	95
42	95
43	95
44	96
45	96
46	96
47	96
48	97
49	97
50	97
51	97
52	98
53	98
54	98
55	98

Mathematics	
Raw score	Scaled score
56	99
57	99
58	99
59	99
60	99
61	100
62	100
63	100
64	100
65	101
66	101
67	101
68	101
69	102
70	102
71	102
72	102
73	103
74	103
75	103
76	103
77	104
78	104
79	104
80	104
81	105
82	105
83	105



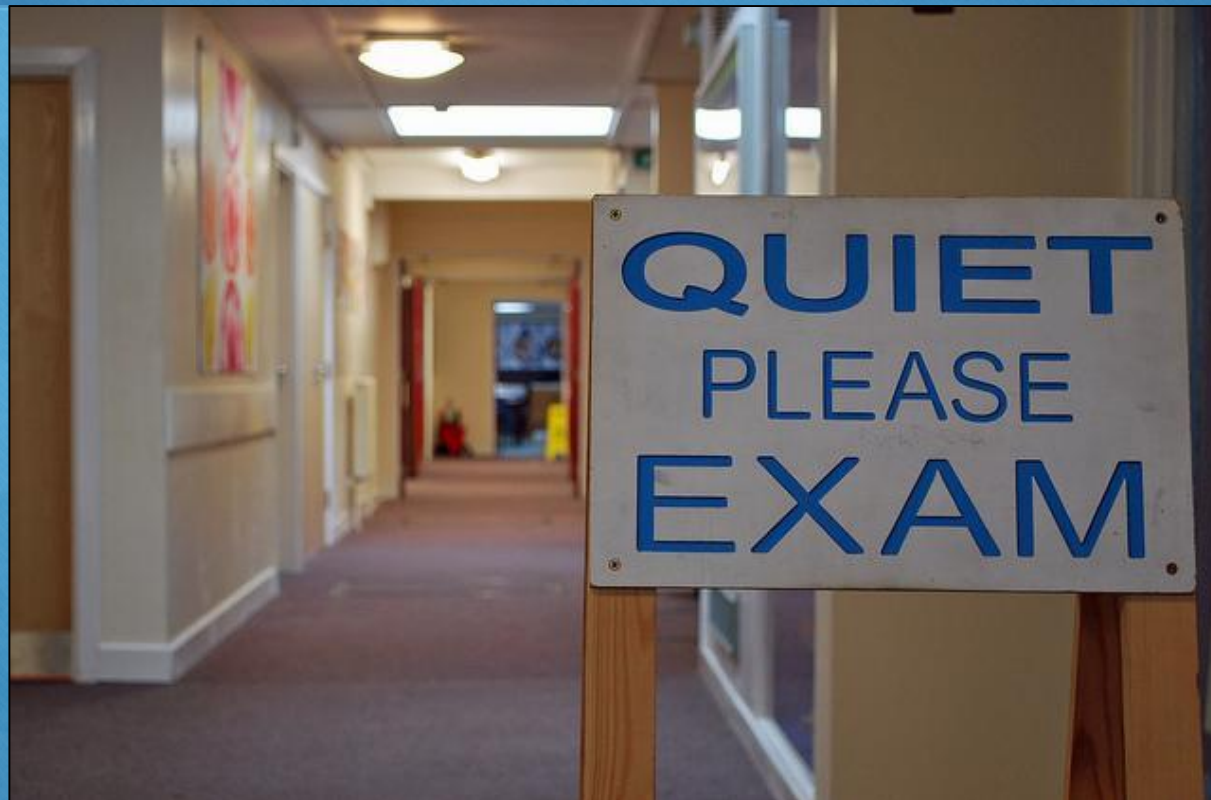
# Scaled Score Examples

English Results			
Test	Raw score	Scaled score	Attained expected standard?
Reading	26	98	No
Grammar, punctuation and Spelling	45	103	Yes
Teacher Assessment	Working towards expectations	Working at expectations	Working at a greater depth within expected standard
Reading		v	Not a national measure
Writing		v	

Maths Results			
	Raw score	Scaled score	Attained expected standard?
Test	63	100	Yes
	Working towards expectations	Working at expectations	Working at a greater depth within expected standard
Teacher assessment		v	Not a national measure



# Administering the tests



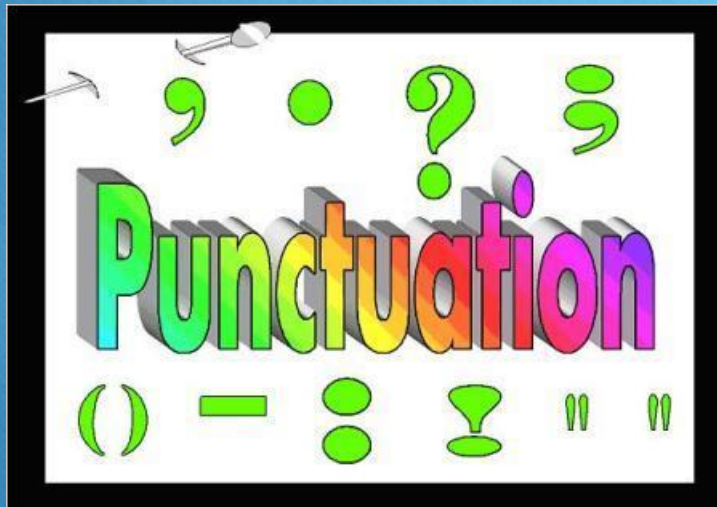




# Administering the tests

- Some children are entitled to different access arrangements, which have strict criteria
  - A reader
  - Extra time
  - A scribe
  - Rest breaks
- These children will be told if this applies to them







# SATs Questions Grammar, Punctuation and Spelling

27

Underline the **subordinate clause** in each sentence below.

Although it was getting late, Dan still hadn't finished his homework.

If you get hungry, help yourself to a snack.

I really enjoy swimming, despite finding it difficult.

---

1 mark



# SATs Questions Grammar, Punctuation and Spelling

6

Which sentence uses the **colon** correctly?

Tick **one**.

I bought several beach toys a bucket: a spade a ball and a kite.

☐

I bought several beach toys a: bucket, a spade, a ball and a kite.

☐

I bought several beach toys: a bucket, a spade, a ball and a kite.

☐

I bought several: beach toys, a bucket, a spade, a ball and a kite.

☐

1 mark









# SATs Reading Text:

Dawn was casting spun-gold threads across a rosy sky over Sawubona Game Reserve as Martine Allen took a last look around to ensure there weren't any witnesses. She leaned forward like a jockey on the track, wound her fingers through a silver mane, and cried, 'Go, Jemmy, go.'

The white giraffe sprang forward so suddenly that she was almost unseated, but she recovered and, wrapping her arms around his neck, quickly adjusted to the familiar rhythm of Jemmy's rocking-horse stride. They swept past the dam and a herd of bubble-blowing hippos, past a flock of startled egrets lifting from the trees like white glitter, and out onto the open savannah plain. An early morning African chorus of doves, crickets and go-away birds provided a soundtrack.



# SATs Reading Questions:

Questions 12–22 are about *Wild Ride* (pages 6–8)

Circle the correct option to complete each sentence below.

**12**

(a) The text begins with Martine going out to ride her giraffe...

in the early morning.

at midday.

in the late afternoon.

at night.

1 mark

(b) Martine rode her giraffe...

slowly.

speedily.

safely.

fearfully.

1 mark



**21**

In what ways might Martine's character appeal to many readers?

Explain fully, referring to the text in your answer.

---

---

---

---

---

---

---


---

---

---

3 marks




$$x_{1/2} = \frac{-b \pm \sqrt{b^2 - 4ac}}{2a}$$

Mathematics

$$y = a \cdot x^2$$



# SATs Questions

## Mathematics Paper 1

24

$$15.4 - 8.88 =$$

☐

1 mark

25

1 3 3 0 1 6

Show  
your  
method

☐

2 marks



# SATs Questions

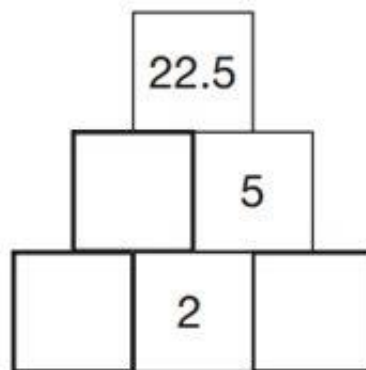
## Mathematics Paper 2 or 3

14

Here is a number pyramid.

The number in a box is the **product** of the two numbers below it.

Write the missing numbers.



2 marks



## 2 marks



# How to Help Your Child with Writing





# How to Help Your Child with Reading



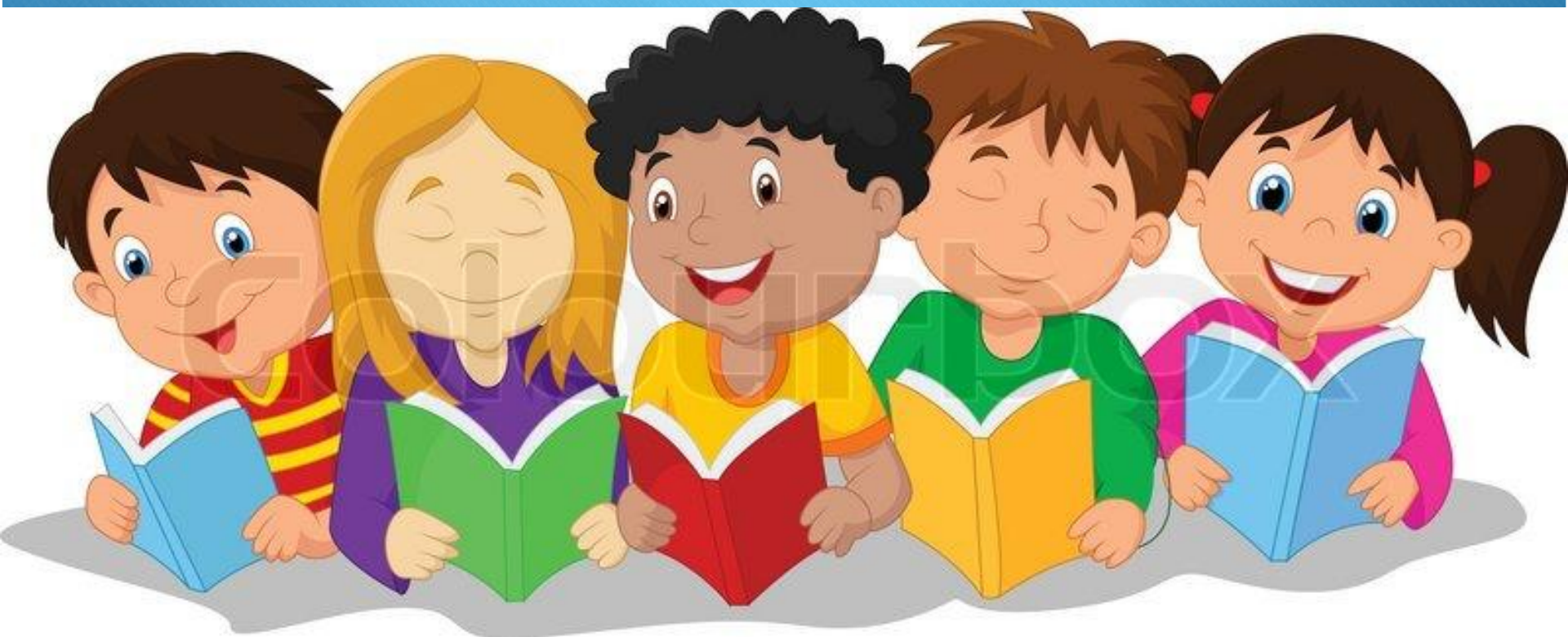


# How to Help Your Child with Maths





# Other suggestions







# Top Tips for during the tests

- Ensure children have a good night sleep before the tests
- Make sure children have breakfast before they come to school. A Year 6 breakfast club will be held every day
- Talk to them about the tests
- Don't put too much pressure on them
- Teach them relaxation techniques
- Complete some nice activities with them
- Tell them you will be proud of them





# Additional Information

- Do not let children post anything on social media (until after 19<sup>th</sup> May) as there may be children who have to do their tests on another day
- Please look out for homework this holiday to be used as revision
- Details around how data is processed in line with the requirements of the ARA are available for you upon request
  - This will include how your child's data is used