

## Weekly Learning Letter

**Friday 22<sup>nd</sup> March 2024**

### Neurodiversity Celebration Week

It was Neurodiversity Celebration Week. This is a worldwide initiative that challenges stereotypes and misconceptions about neurological differences. It aims to transform how neurodivergent individuals are perceived and supported by providing schools, universities, and organisations with the opportunity to recognise the many talents and advantages of being neurodivergent, while creating more inclusive and equitable cultures that celebrate differences and empower every individual.

In Year 1, we looked at what neurodiversity means, and we were introduced to some well-known, neurodivergent people and the great successes that they have had.

On Thursday 21<sup>st</sup> March, it was World Down's Syndrome Awareness Day. The theme was 'End The Stereotypes'. The theme aims to discourage people from treating all people with Down syndrome as if they are the same and underestimating them or excluding them. As well as raising awareness of how stereotypes can be harmful.

### English

The children have been writing a letter to Beegu's mother in the role of Beegu. We focused on being very accurate in our writing using full stops and capital letters consistently to talk about the adventures we had had since crashing onto Earth. The children wrote about how they felt being on Earth alone and they wrote questions to their mother.

### Phonics:

The sounds we have looked at this week in phonics are the following; **ch** (chef, school), **ze** (freeze), **a** (water, paper). We reviewed the tricky words: **laugh, eye, because, our, once**.

### Maths

This week, we have been looking at measuring height and length using non-standard units. We found objects around the room and measured the length and height using different classroom objects such as blocks and pens. We talked about the rules of measuring and how important it is to be accurate when measuring.

## Weekly Learning Letter

### DT Day

On Thursday, the children spent the day designing and making space belts, which they will be using on their space day next week. They tested materials to find which was the strongest and best to use. They also looked at the best material to make a fastener for their belt.

### Learning next week:

In English, we will be having a space day which the children will then be writing a recount about.

In maths, we will be exploring mass. We will be measuring and comparing the mass of objects using non-standard units.

In art, the children will be making their own print stencils and creating compositions using these.

In Science, we will be naming and identifying common plants, including deciduous and evergreen trees, and looking at their structures.

### Collaborative Meeting: Tackling Bias

At Kilmore we want all families to be equally valued. Thanks to the honest feedback from parents we have realised that there is still work to be done to ensure **all** parents feel included in school life. With this in mind, we would like to invite all parents from the Early Phase (Nursery – Year 1) to join us in sharing their ideas and experience to help us tackle biases that exist in the school.

We are focusing on the Early Phase first due to this usually being the first experience parents have with us. We will be discussing how to make the Early Years Garden party a more inclusive experience for all, as well as the accessibility and relevance of the website and newsletter.

Please come to the meeting on **Wednesday 27<sup>th</sup> March at 15:40** in the **Nursery**, you can enter via the Elsinore Gate. You are welcome to bring your children with you to play in the Nursery whilst we meet, which may include some screen time.

If you are unable to attend or would feel more comfortable sharing your ideas on a 1:1 basis, please email [info@kilmore.lewisham.sch.uk](mailto:info@kilmore.lewisham.sch.uk) FAO Ashleigh and Philippa.

## Weekly Learning Letter

### Early Years Garden Party

Early Phase (Nursery, Reception, Year 1) and the Friends of Kilmore are pleased to announce that we will be holding our **Early Phase Garden Party** on **Saturday 11<sup>th</sup> May from 11.30-14.30pm** in order to raise funds for our indoor and outdoor construction and small world areas. We are currently planning lots of exciting activities, games and stalls.

To make this a success, we need your help! We need you to create a poster which will be displayed around the school to let everyone know about our amazing event. Three of these will then be selected (one from each year group) to become our official invites that will be sent to our future Reception families.

All children that create a poster will have them displayed around the school.

Your poster can be as imaginative as you wish but needs to include the following,

- Early Years Garden Party
- Saturday 11<sup>th</sup> May
- 11:30 – 14:30

Once completed please hand your poster into your class teacher or Ashleigh.  
Thank you for all your support.

### Home learning ideas:

Practise reading and spelling these words at home:

**with    they    because    who    through  
thought**

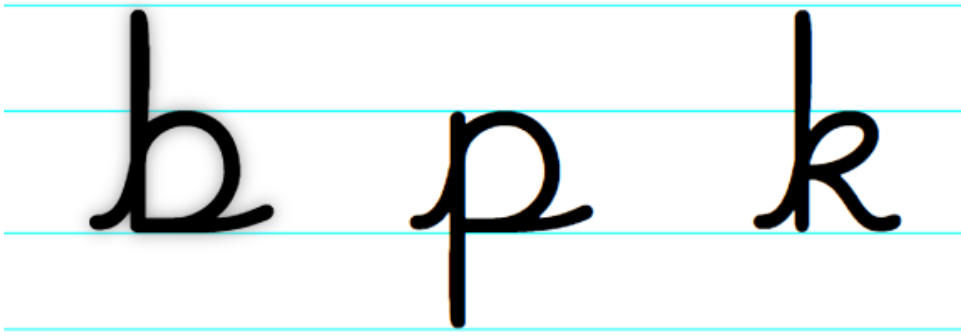
**Monday, Tuesday, Wednesday, Thursday, Friday, Saturday, Sunday**

Find who has the longest feet in your family and use non-standard units to measure them:



## Weekly Learning Letter

Practise your handwriting:



**Have a great weekend**

**Year 1 Team**